



Subject: Installing a Printer in Mac OS X.

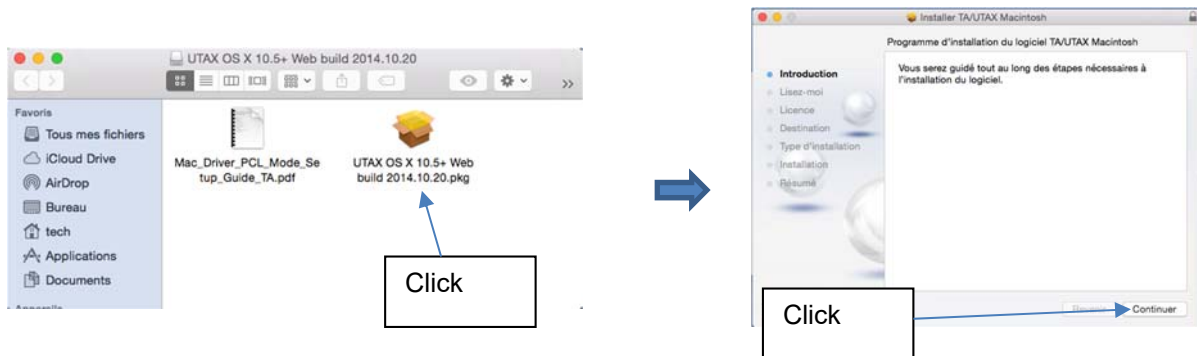
Models : All systems.

Principle : *Installing an LPR / LPD printer on Macintosh.*

Note : *Often, under "MacOS X", it is believed that the printer installation was successful. However, when the first impression is made, the file remains blocked in the print spool, or some features are not available. It is then necessary to check some settings.*

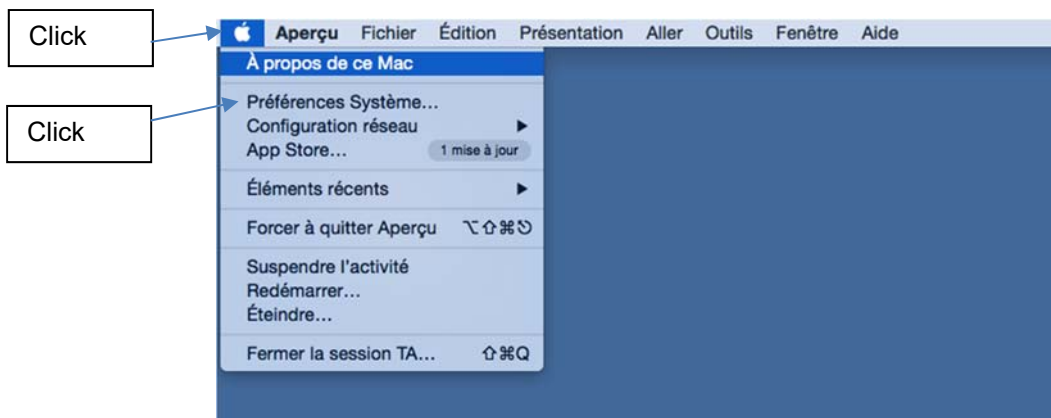
1 Installing the Print Drivers.

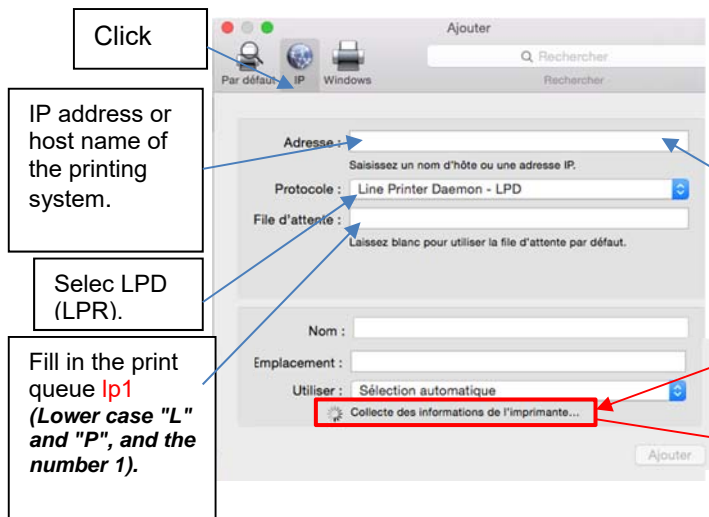
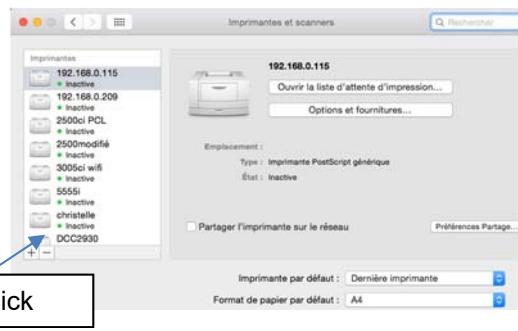
After downloading the latest print drivers from the Triumph-Adler site, you must launch the installation file by clicking on it and following the instructions.



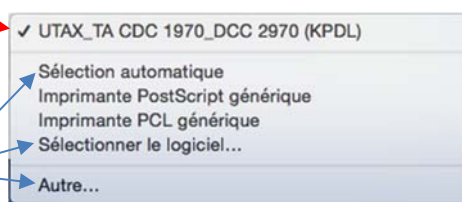
2 System Preferences.

Installing a printer is done at the Macintosh system preferences. You must click on "apple" menu in the upper left corner of your screen and then select the line "System Preferences ..."



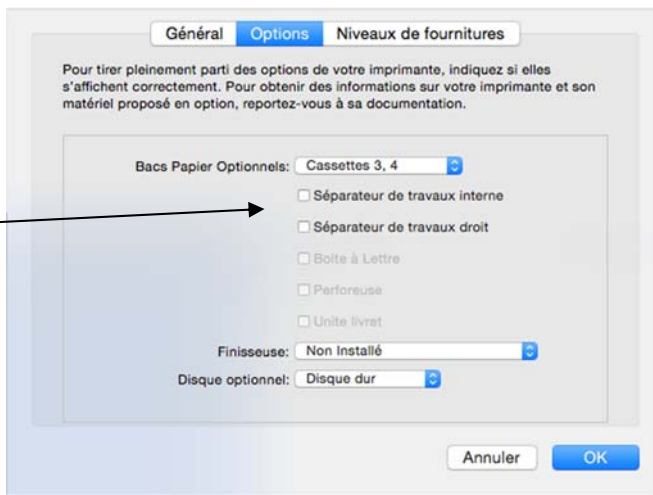


When the address is entered, the Mac automatically searches for a printer driver (PPD) available for this machine



When the PPD is not found in the Macintosh system folder, a generic print driver is installed instead.
 Either it may be necessary to restart the installation of the PPD, or it can be selected manually by clicking on the different proposals.

Complete the options available on your printing system.



Warning

- 1- 1- If you change the "print port" (IP address or print queue), you need to create a new printer and delete the old one.
- 2- 2- Because of the LPR protocol, the printer is declared as inactive but this does not prevent printing.