

SECTION 5

Test Reports of Power Consumption (EN50564 /2011)

Conformity of 2009/125/EC Energy-related Products Directive

Regulation

2008/1275/EC, 2013/801/EC

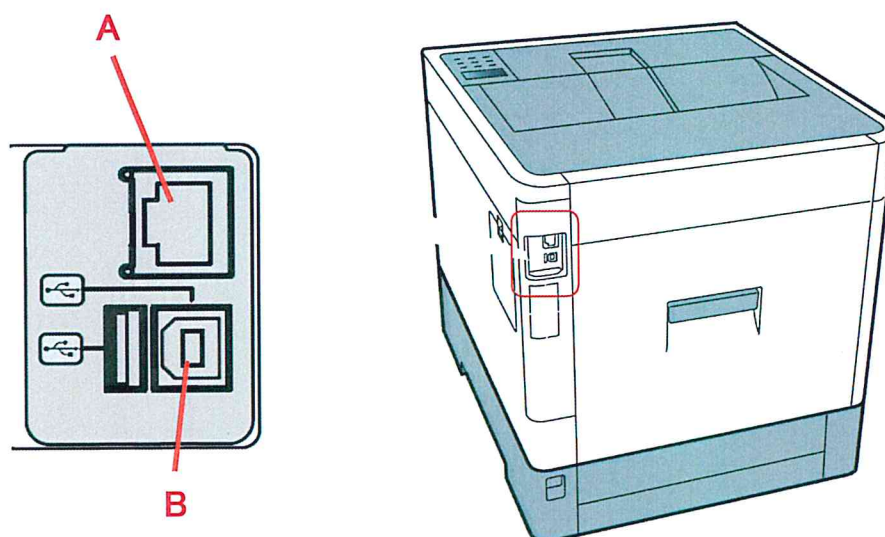
Harmonized Standard

EN50564: 2011

Mode	Limit	Result
Off - mode	0.5W	PASS
Networked standby	6.0W	PASS

Machine Structure (Default condition)

This machine is Network equipment.



Location	Protocol	Condition before delivery	Transition time to network standby	Network speed
A	Ethernet 10BASE / 100BASE / 1000BASE	Active	1 min	1Gbps
B	USB 2.0	Active	1 min	480Mbps

Location	Triger for reactivate
A	External signal, GO Key on Operation Panel
B	External signal, GO Key on Operation Panel

Event of automatically changes modes

Mode	Location	Event	Transition time
Off mode	--	None	--
Networked standby	A	without operation continually	1 min
Networked standby	B	without operation continually	1 min

Test Record

Model.....ECOSYS P6130cdn

Serial.....Z5Q4Z00013

Date.....December 19, 2014

Testing Place.....Safety Satandard Test Room

Input.....230V, 50Hz

Harmonic distortion.....1.2%

Temperature.....23.3°C

Humidity.....23%

Tested by

Masashi Morimoto

M. Morimoto

Supervised by

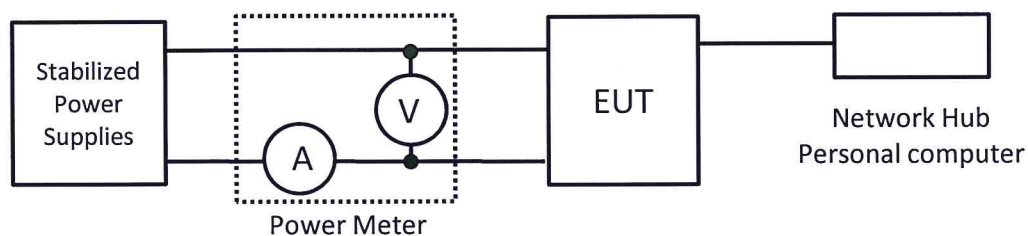
Yasutaro Okamoto

Y. Okamoto

Measurement result

Mode	condition	Power consumption	Mesurement Uncertentity
Off-mode	Plug in off	0.2W	0.034W
Networked standby	Ethernet: connect.	2.4.W	0.034W
	USB: connect.	1.9W	0.034W

Measurement condition



Name	Manufacturer	Model	Serial No
Power Meter	Yokogawa	760101	91K53574
Stabilized Power Supplies	Kikusui	PCR4000L	BB002817
Network Hub	Buffalo	BSL-WS-G2108M	16462030502847
Personal computer	DELL	VOSTRO 1540	33074934445

Conformity of 2009/125/EC Energy-related Products Directive

Regulation

2008/1275/EC, 2013/801/EC

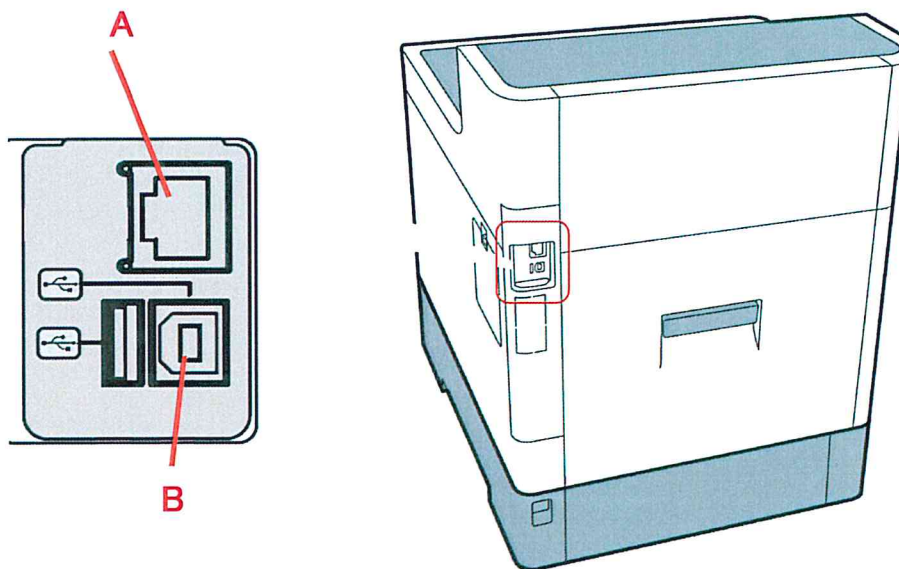
Harmonized Standard

EN50564: 2011

Mode	Limit	Result
Off - mode	0.5W	PASS
Networked standby	6.0W	PASS

Machine Structure (Default condition)

This machine is Network equipment.



Location	Protocol	Condition before delivery	Transition time to network standby	Network speed
A	Ethernet 10BASE / 100BASE / 1000BASE	Active	1 min	1Gbps
B	USB 2.0	Active	1 min	480Mbps

Location	Triger for reactivate
A	External signal, OK Key on Operation Panel
B	External signal, OK Key on Operation Panel

Event of automatically changes modes

Mode	Location	Event	Transition time
Off mode	--	None	--
Networked standby	A	without operation continually	1 min
Networked standby	B	without operation continually	1 min

Test Record

Model.....ECOSYS P6035cdn
 Serial.....Z5U4Z00060

 Date.....December 19, 2014
 Testing Place.....Safety Satandard Test Room
 Input.....230V, 50Hz
 Harmonic distortion.....1.2%
 Temperature.....23.2°C
 Humidity.....24%

Tested by

Masashi Morimoto

M. Morimoto

Supervised by

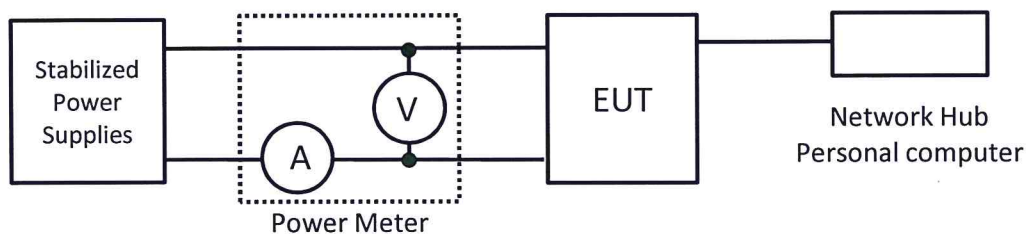
Yasutaro Okamoto

Y. Okamoto

Measurement result

Mode	condition	Power consumption	Mesurement Uncertentity
Off-mode	Plug in off	0.2W	0.034W
Networked standby	Ethernet: connect.	2.4W	0.034W
	USB: connect.	1.9W	0.034W

Measurement condition



Name	Manufacturer	Model	Serial No
Power Meter	Yokogawa	760101	91K53574
Stabilized Power Supplies	Kikusui	PCR4000L	BB002817
Network Hub	Buffalo	BSL-WS-G2108M	16462030502847
Personal computer	DELL	VOSTRO 1540	33074934445